

Product Application



MAN + B&W Diesel AG Augsburg

Application

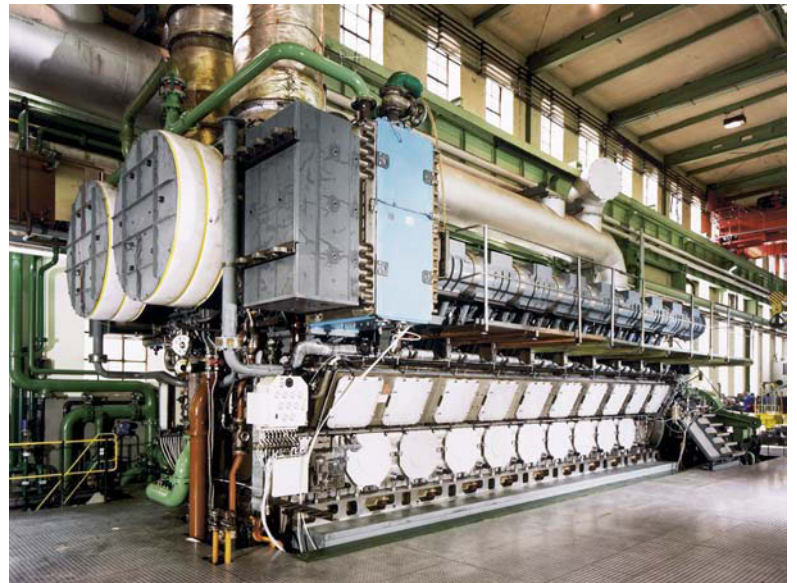
The rotational speed of a diesel engine must be controlled. The CRRA is used as a second safety device. If over-speed is detected, the diesel engine has to be shut down. Under-speed should be indicated by a flashing light signal.

Because of the different optimal rotation speeds of all engines, the system should be field programmable. Special functions as active starting-bridge, switch back time delay, reset switching value (hysteresis), and additional analog signal outputs for external analog indicators should be possible. For shipboard use, the speed monitor needs special GL approval.

Solution

The RheinTacho speed monitor CRRA monitors the rotational speed of the diesel engine. RPM limits of the engine are programmed into the CRRA.

MAN selected model CRRA (5823.200). This type includes 2 independent, freely programmable relays, an additional analog output, and a marine classification approval (GL).



1: 6-key programming board; 2: current value; 3: relay B (not active); 4: limit relay A; 5: limit value relay A; 6: switching direction relay A; 7: switching direction relay B (not active); 8: measurement unit

Rheintacho is a flexible, highly efficient partner wherever speed must be measured, monitored or indicated. Innovation, the most modern production techniques and equipment, meticulous quality control, along with a first-class workforce are the cornerstones of our company. For the past 100 years, Rheintacho has used his extensive knowledge and experience to developed sensors, systems and customized solutions to meet the customer's requirements.